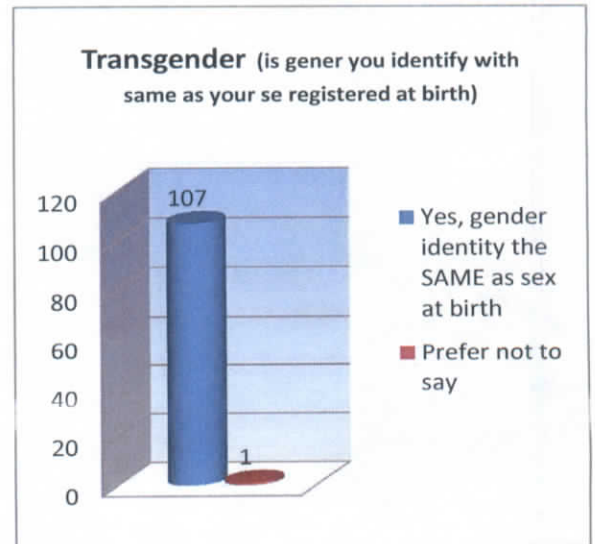
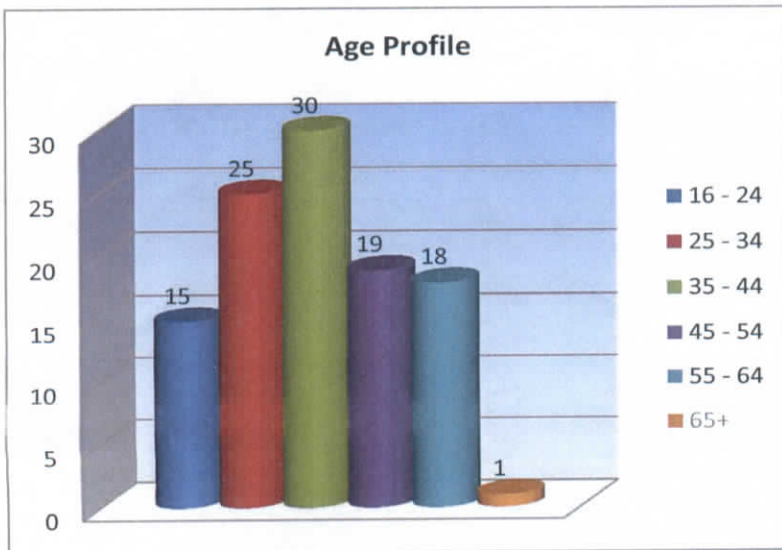
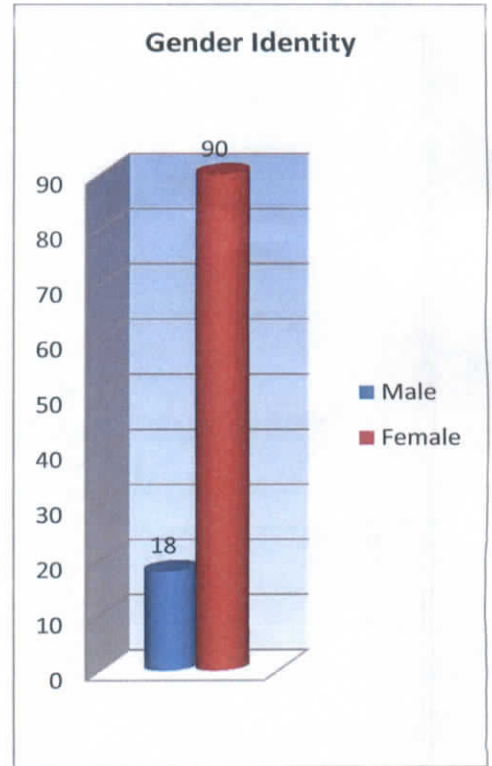
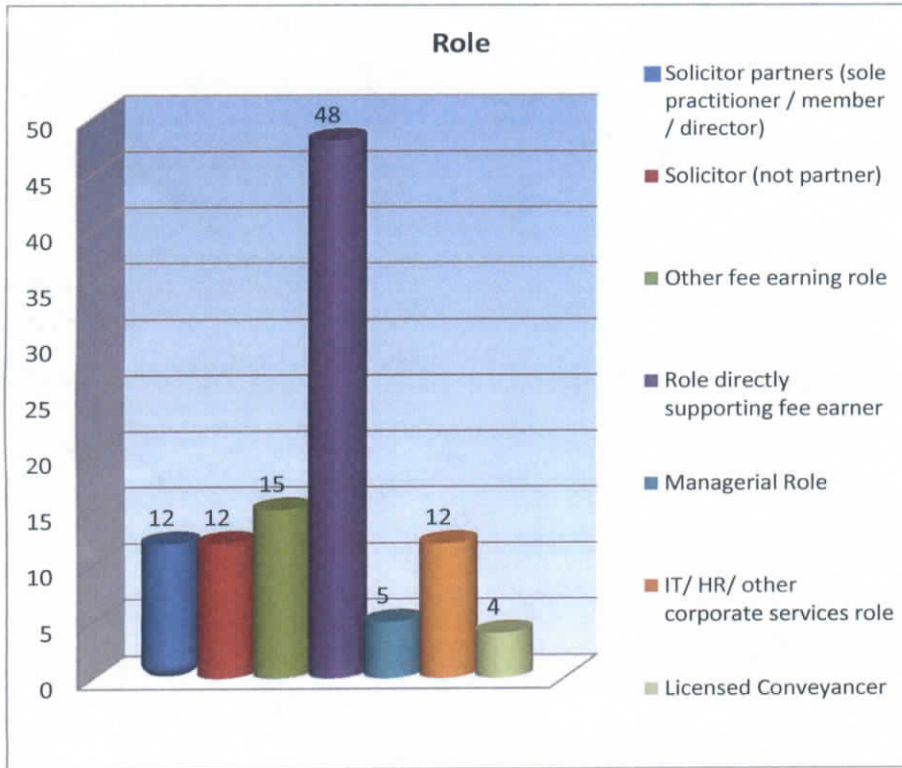
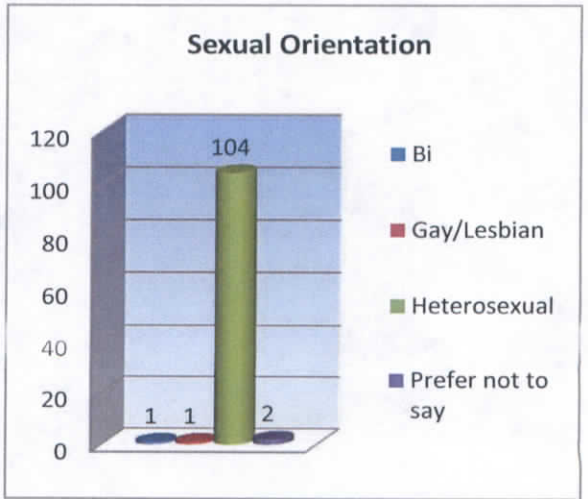
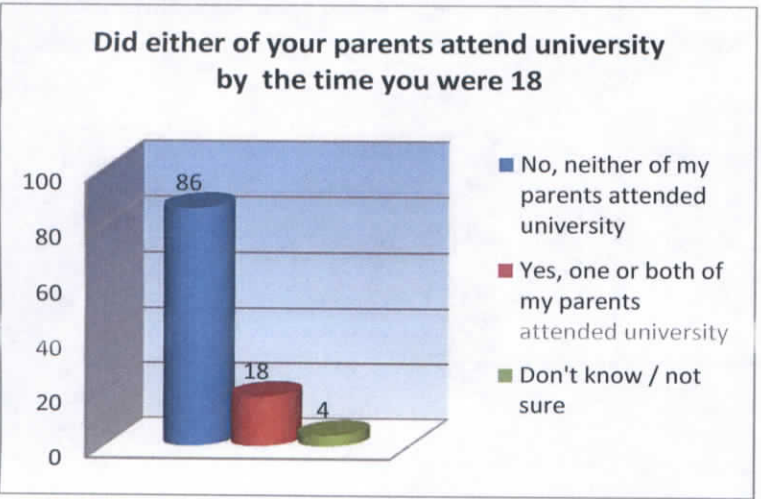
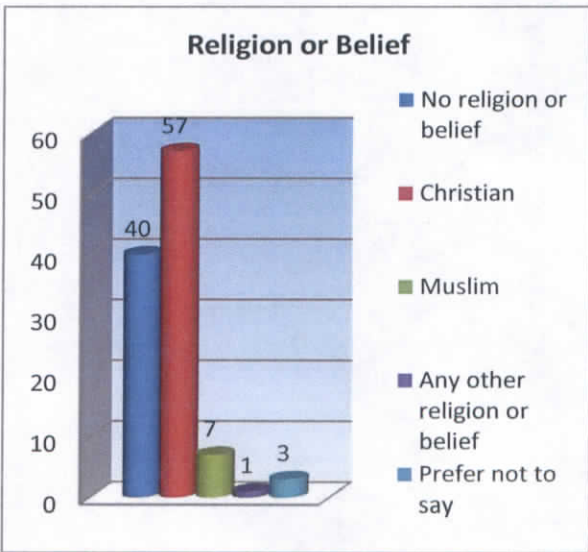
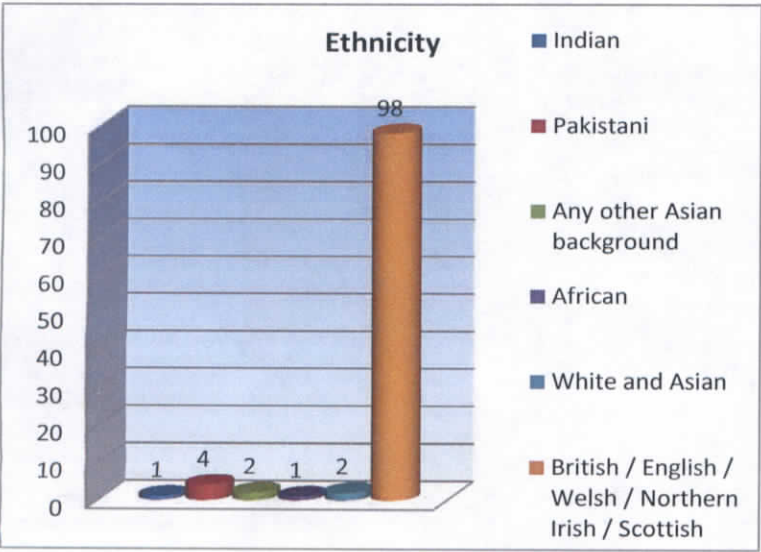
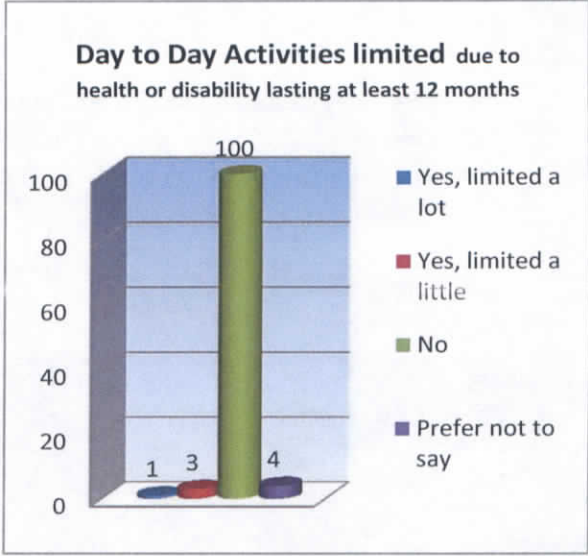
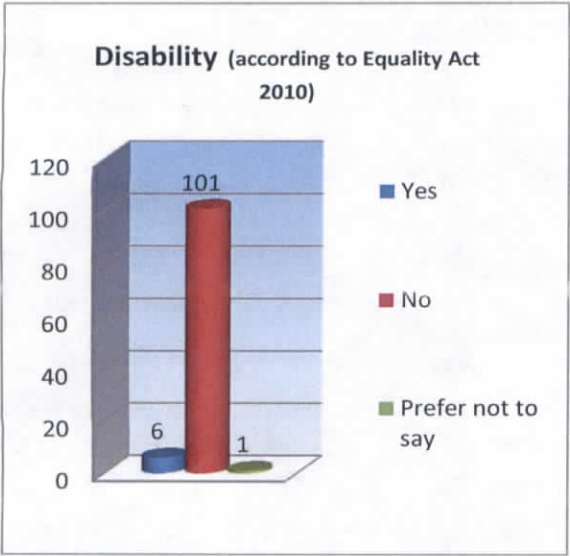


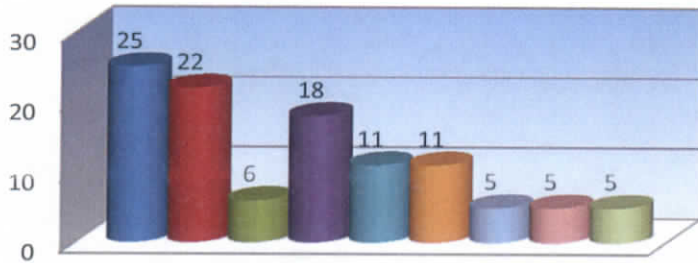
## Russell & Russell Equality and Diversity Survey - July 2021

The survey was circulated to 186 staff members (including partners) via email June 2021. Reminder emails were sent during the survey period to encourage participation. The E&D survey is a mandatory SRA requirement. 108 staff completed the survey to give a 58% response rate.



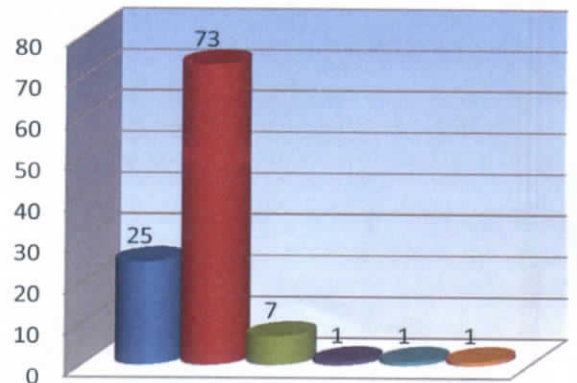


### Occupation of main household earner when you were about 14



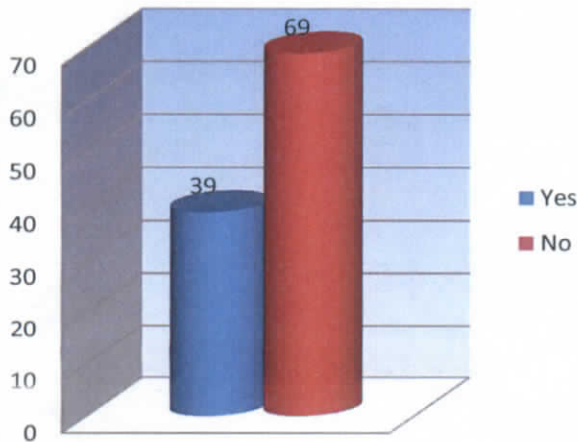
- Modern professional and traditional professional occupations such as: teacher, solicitor, accountant etc
- Senior, middle or junior managers or administrators such as: finance manager, chief executive etc
- Clerical and intermediate occupations such as: secretary, personal assistant etc
- Technical and craft occupations such as: motor mechanic, plumber etc
- Routine, semi-routine manual and service occupations such as: postal worker, machine operative etc
- Small business owners who employed less than 25 people such as: corner shop owners, small plumbing companies etc
- Long term unemployed (claimed Jobseeker's Allowance or earlier unemployment benefit for more than a year)
- Other, such as: retired, this question does not apply to me, I don't know
- Prefer not to say)

### Which type of school between ages 11 and 16



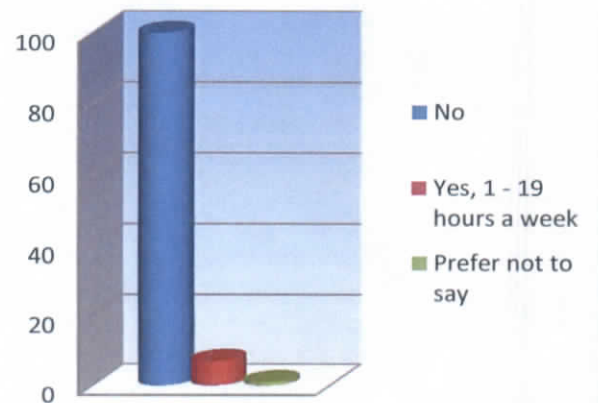
- State-run or state-funded school - selective on academic, faith or other grounds
- State-run or state-funded school - non-selective
- Independent / fee-paying school
- Attended school outside the UK
- Don't know / not sure
- Prefer not to say

### Primary Carer for child under 18



- Yes
- No

### look after someone with long term ill health/disability/age



- No
- Yes, 1 - 19 hours a week
- Prefer not to say